



Warning before installation

- Power off the Network camera if it is found to be smoking or smells unusual.
- Keep the Network camera away from water. If the Network camera gets wet, power off immediately.
- Do not place the Network camera near heat sources, such as a television or oven.
- Refer to your instruction manual for the operating temperature.
- Keep the Network camera away from direct sunlight.
- Do not place the Network camera in high humidity environments.
- Do not place the Network camera on unsteady surfaces.
- Do not touch the Network camera when there is lightning present.
- Do not disassemble the Network camera.
- Do not drop the Network camera.
- Do not insert any object into the Network camera, such as a screwdriver.

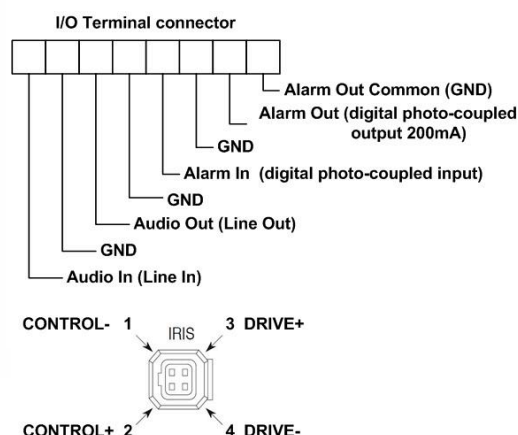
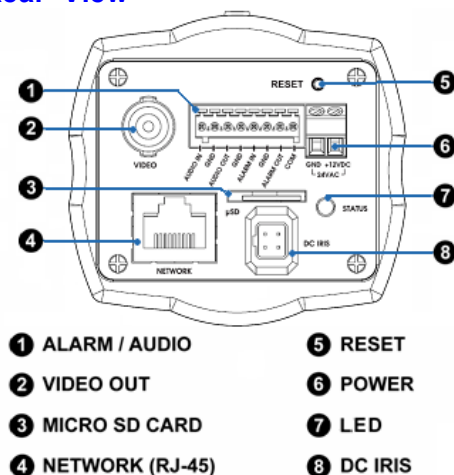
For other safety and regulation information, please refer to “User’s manual”.

1. Check Contents

No.	Item	Description
1	Network Camera	ZN-C Series (ZN-C2M / ZN-C1M / ZN-C1)
2	Software CD	User’s Manual, Utility software
3	Quick User Guide	This document
4	Accessories	Tripod mount Screws for tripod mount C mount adapter ring DC jack adapter Dust protection cap, Terminal block connector Allen Wrench
5	Lens	(Optional)

2. Physical Description

Rear View

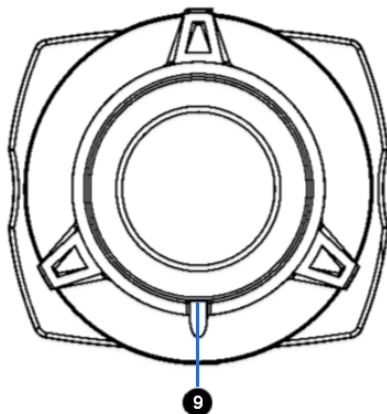


1. Alarm In/Out, Audio In/Out (use terminal block connector)
2. Video Out
3. Micro SD card (SDHC supported)



4. Network (RJ-45 PoE supported)
5. Reset Button
6. Power (DC12V / AC24V)
7. Status LED
8. DC Iris

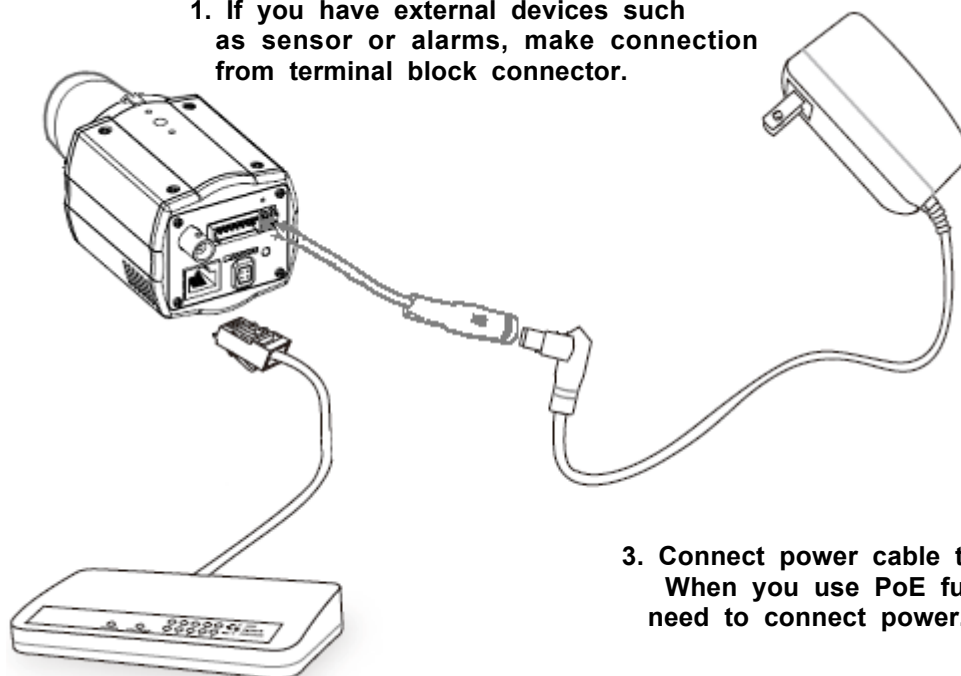
Front View



9. Flange back locking screw

3. Making Connection

1. If you have external devices such as sensor or alarms, make connection from terminal block connector.



2. Connect Ethernet cable to make connection to the network hub.

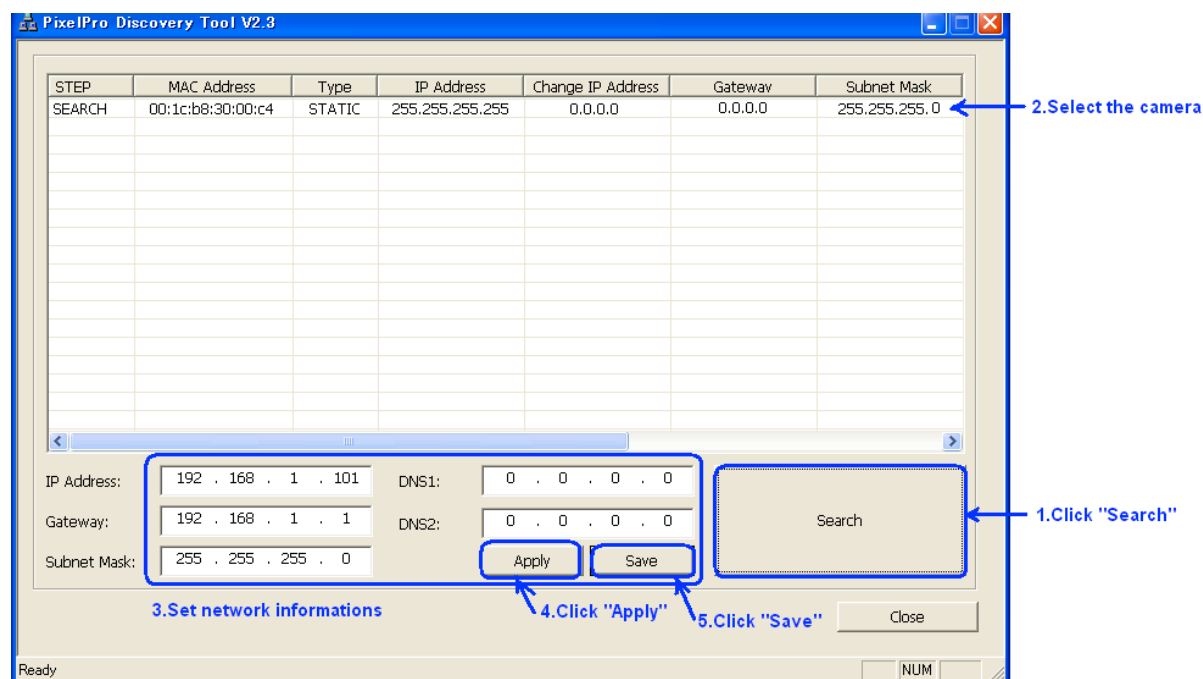
3. Connect power cable to the camera.
When you use PoE function, you don't need to connect power.

4. Assign IP address

The default setting of the camera is set to “DHCP” and “UPnP” function is set to ON. If you have a DHCP server on your network and UPnP function is enabled on your PC you can find the network camera in “My network”.

If a DHCP server is not available on your network, please assign IP address by the following process.

- 1) Execute ZR-DS Admintool.exe and click “Search” button.
- 2) After the camera is listed in camera list, select the camera.
- 3) Type in the all network information.
- 4) Click “Apply” button, the setting will be showed in the list.
- 5) Click “Save” Button to set network information to the camera.



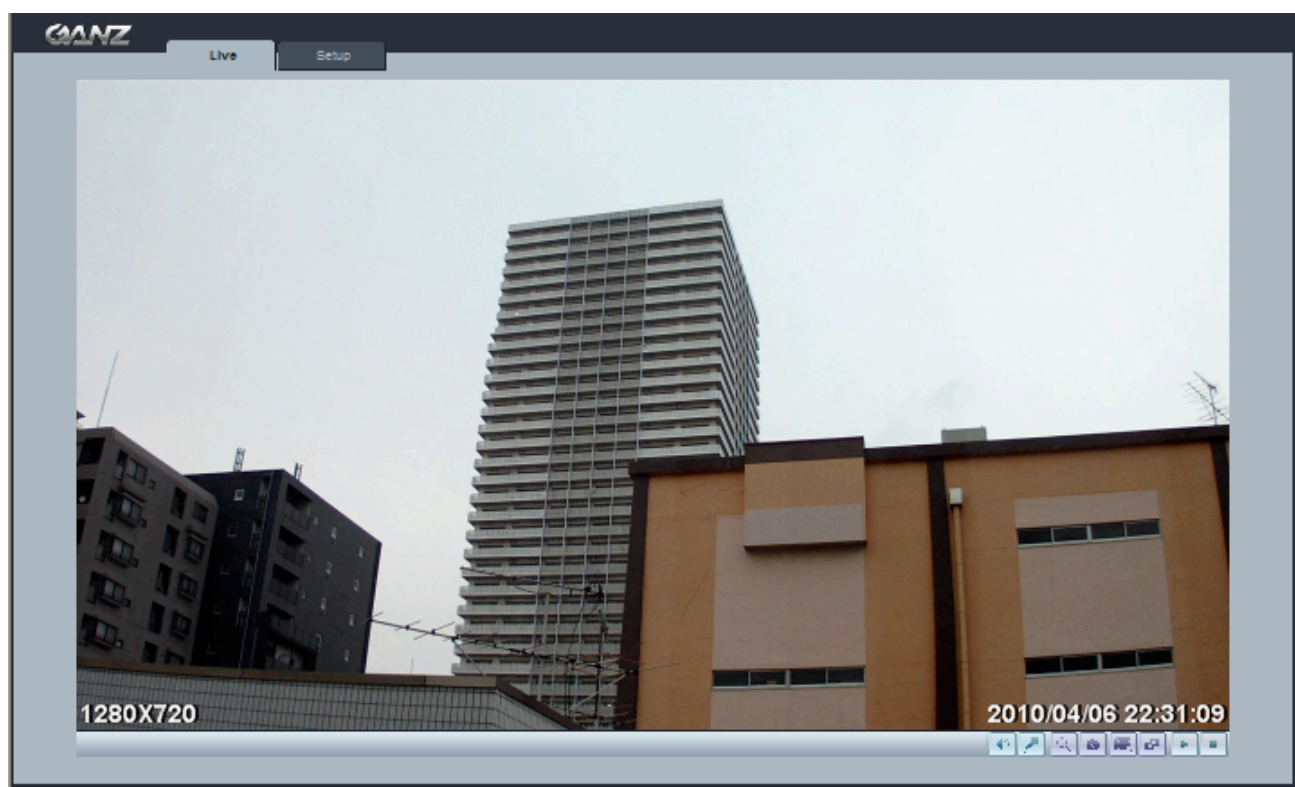
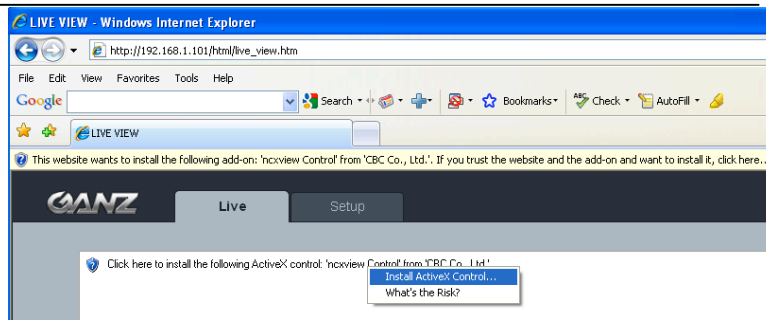
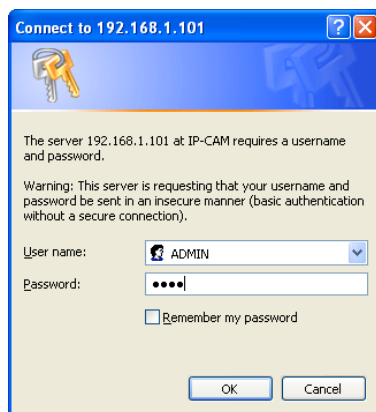
Then double click the camera in the list, Internet explorer will open automatically.

5. Web browser connection

Note : The Network camera supports Internet Explorer 7 or above.
Please check version of your browser and update it if necessary.

When you first access the camera you need to download and install an Active X control from the camera to display a Live image.

Default User and Password are set to “ADMIN” and “1234”. Please type in the user ID and password to connect the network camera.



Note: By Default the cameras come with “Installation Mode” set to “ON” to enable Analog output. You must turn installation mode off to use 720p or 1080p streaming.

For further information for setup, please refer to User's manual in software CD.